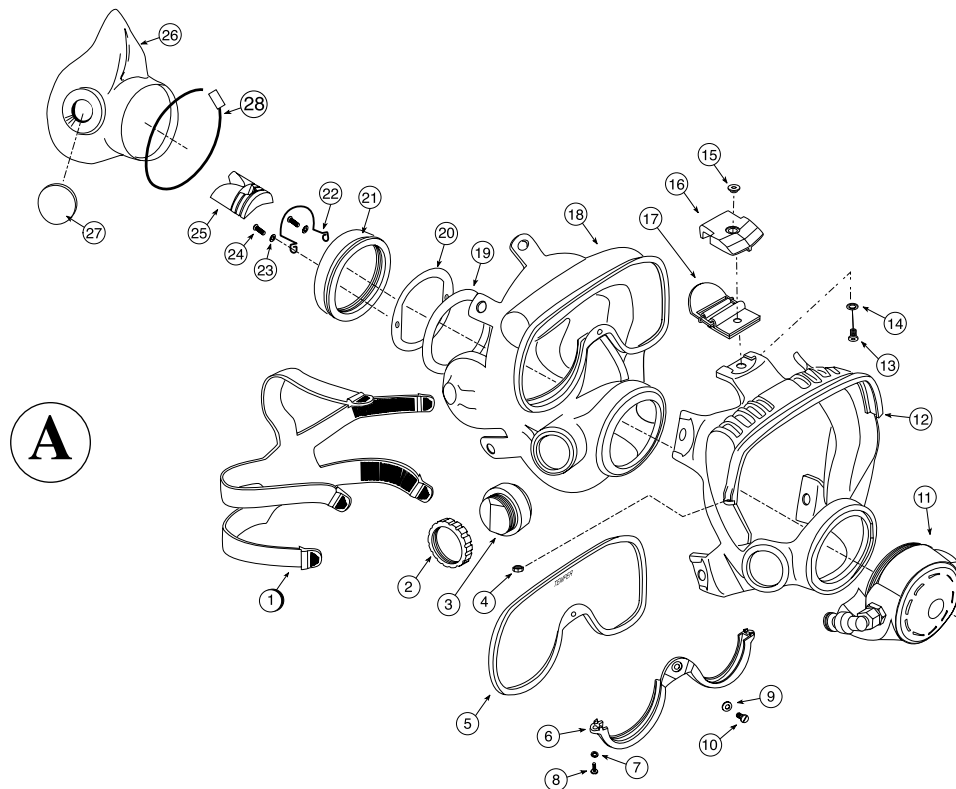


## Kirby Morgan EXO BR MS Balanced Regulator Full Face Mask



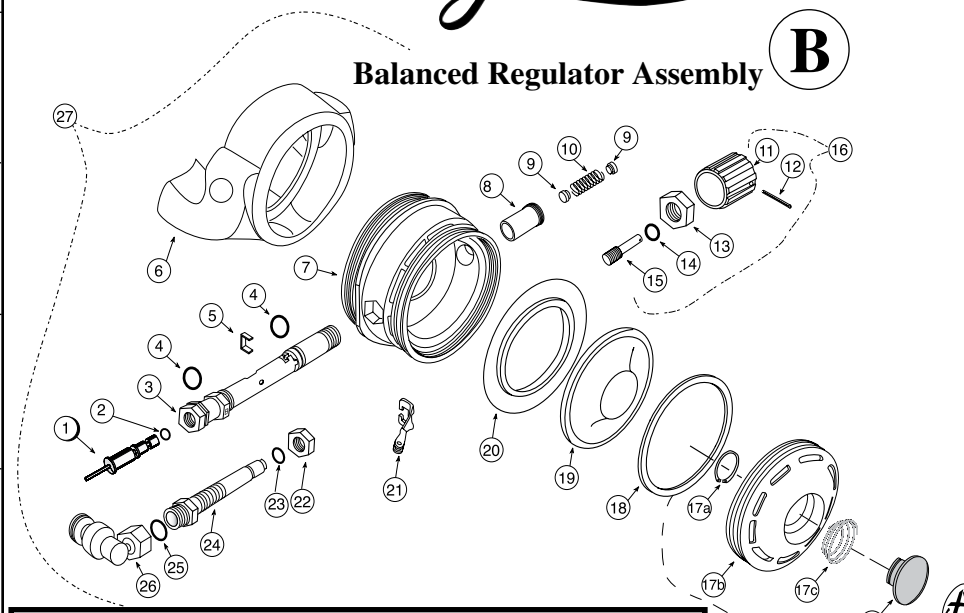
**A**

### Product Changes

Following publication of this booklet, certain changes in standard equipment, options, prices and the like may have occurred which would not be included in these pages. Your Authorized KMDSI dealer is your best source for up-to-date information on any of these products. © Kirby Morgan Dive Systems, Inc. reserves the right to change product specifications at any time without incurring obligations.

1	310-025	Spider
2	320-026	Comm Mount Nut
3	305-020	Comm Plug, w/ screws & Washers
4	330-105	Nut
5	365-002	Lens
6	320-028	Clamp, yellow
7	330-205	Washer
8	330-005	Screw
9	330-506	Washer
10	330-010	Screw
11	305-040	Regulator Assem.
12	320-016	Frame EXOskeleton, yellow
13	330-020	Screw
14	330-210	Washer
15	350-040	Nut
16	320-021	Buckle Cap, yellow
17	345-010	Buckle
18	310-001	Mask Seal
19	320-040	Reg. Mount Washer
20	340-015	Mount Ring
21	350-047	Mount Nut
22	330-900	Wire Retainer
23	330-515	Washer
24	330-040	Screw
25	310-357	Equalizer
26	310-055	Oral Nasal
27	320-001	Plug
28	320-048	Tie Wrap

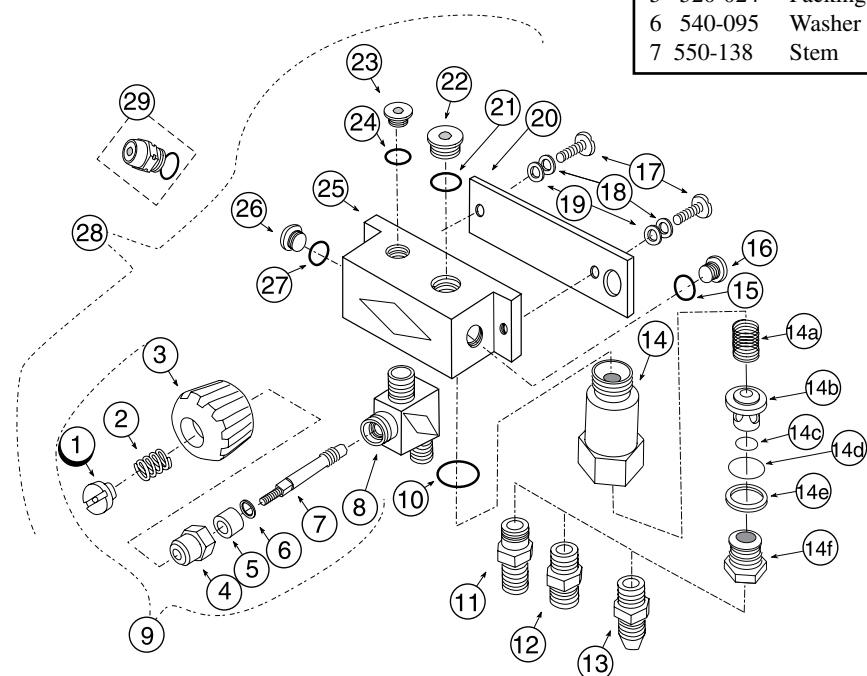
1	305-057	Inlet Valve
2	310-006	O-Ring
3	350-032	Main Tube
4	310-013	O-Ring
5	340-004	Horseshoe
6	310-020	Exhaust Whisker
7	320-041	Regulator Body
8	350-035	Sleeve
9	350-065	Spacer
10	535-910	Spring
11	320-035	Knob, Adjustment
12	530-601	Roll Pin
13	350-025	Packing Nut
14	510-011	O-Ring
15	350-052	Shaft, Adjustment
16	305-045	Reg Adjustment Assem.
17	305-060	Cover Assembly
17a	535-905	Retaining Clip
17b	350-075	Cover
17c	535-810	Spring, Purge Button
17d	520-017	Purge Button
17e	320-080	Purge Button Sticker
18	320-030	Washer
19	510-553	Diaphragm
20	310-065	Exhaust Valve
21	545-038	Roller Lever
22	350-020	Nut, Adjustment Lock
23	310-007	O-Ring
24	350-042	Nipple Tube
25	510-010	O-Ring
26	305-017	Hi Flow air inlet swivel. (w/ 25)
27	305-040	Regulator Assembly



### Balanced Regulator Assembly **B**

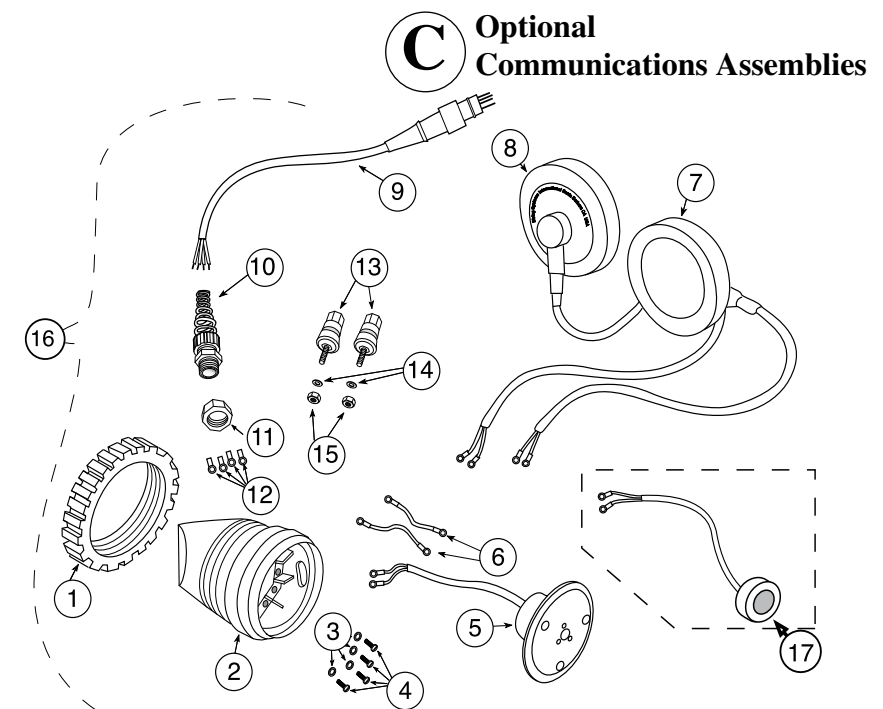
**CAUTION**  
Use only Kirby Morgan original replacement parts. The use of other manufacturer's parts will interfere with the performance characteristics of your life support equipment and may jeopardize your safety. Additionally, any substitutions will void any warranties offered by KMDSI. When ordering spares, always insist on Kirby Morgan original parts.

### **D** Optional Manifold Block Assembly



1	550-019	Locknut	
2	535-802	Spring	
3	520-025	Knob	
4	550-091	Packing Nut	
5	520-024	Packing	
6	540-095	Washer	
7	550-138	Stem	
8	550-140	Emergency Valve Body	
9	505-070	Emergency Valve Assembly	
10	510-483	O-Ring	
11	355-205	Scuba Adapter	
12	555-117	Adapter, Brass O <sub>2</sub>	
13	355-225	Adapter, Brass #6 JIC	
14	555-195	One Way Valve High Flow	
14a	Spring		
14b	Poppet	Order Complete	For Replacement Parts
14c	O-Ring	see	Order Kit
14d	O-Ring	see	Order Kit
14e	Wiper	Loc. # 14	#525-330
14f	Seat		
15	310-003	O-Ring	
16	550-095	Plug, small w/O-ring	
17	530-070	Screw	
18	330-405	Lock washer	
19	530-527	Washer	
20	340-011	Backing Plate	
21	510-013	O-Ring	
22	350-060	Plug, Large w/O-ring	
23	550-095	Plug, Small w/O-ring	
24	310-003	O-Ring	
25	350-050	Manifold Block	
26	550-095	Plug, Small w/O-ring	
27	310-003	O-Ring	
28	300-150	Manifold Assem. complete (O <sub>2</sub> )	
	300-155	Manifold Assem. complete (#6 JIC)	
	300-145	Manifold Assem. complete (scuba)	
29	200-017	Over Pressure Relief Valve	

1	320-026	Comm Mount Nut
2	305-020	Comm Module w/3 & 4
	320-023	Comm Module, drilled for posts
	320-024	Comm Module, drilled for W.P.C.
3	330-035	Washer
4	330-030	Screw
5	515-020	Shure Mic. Assembly
6	515-055	Wiring Harness
7	315-016	Earphone Assembly Left
8	315-015	Earphone Assembly Right
9	515-045	Male W.P. Connector
10	315-005	Pigtail
11	350-070	Mount Nut, Pigtail
12	515-049	Terminal
13	315-020	Comm Posts, EXO
14	530-525	Washer
15	530-308	Hex Nut
16	315-210	Comm Module complete assembly w/comms & posts
	315-215	Comm Module complete Assem.. w/comms & Male W.P.Connector
17	315-026	Optional Preamplified Microphone



### **C** Optional Communications Assemblies



**Kirby Morgan Dive Systems, Inc.** 1430 Jason Way, Santa Maria, CA 93455  
**Phone: 805/928-7772 Fax: 805/928-0342**  
**www.KirbyMorgan.com e-mail: info@KirbyMorgan.com**